

Customer  
Logo

# LL0276

## Crystal Wireless Charger

ARTWORK APPROVAL

1

JOB #

CUST #

### QUANTITY:

☐

QTY:

Colour: Clear Acrylic

Below is actual size

### ADVISORY

☐

The design will be printed/engraved on the back/bottom of the charger and will be visible through the acrylic.

DIGITAL PRINT



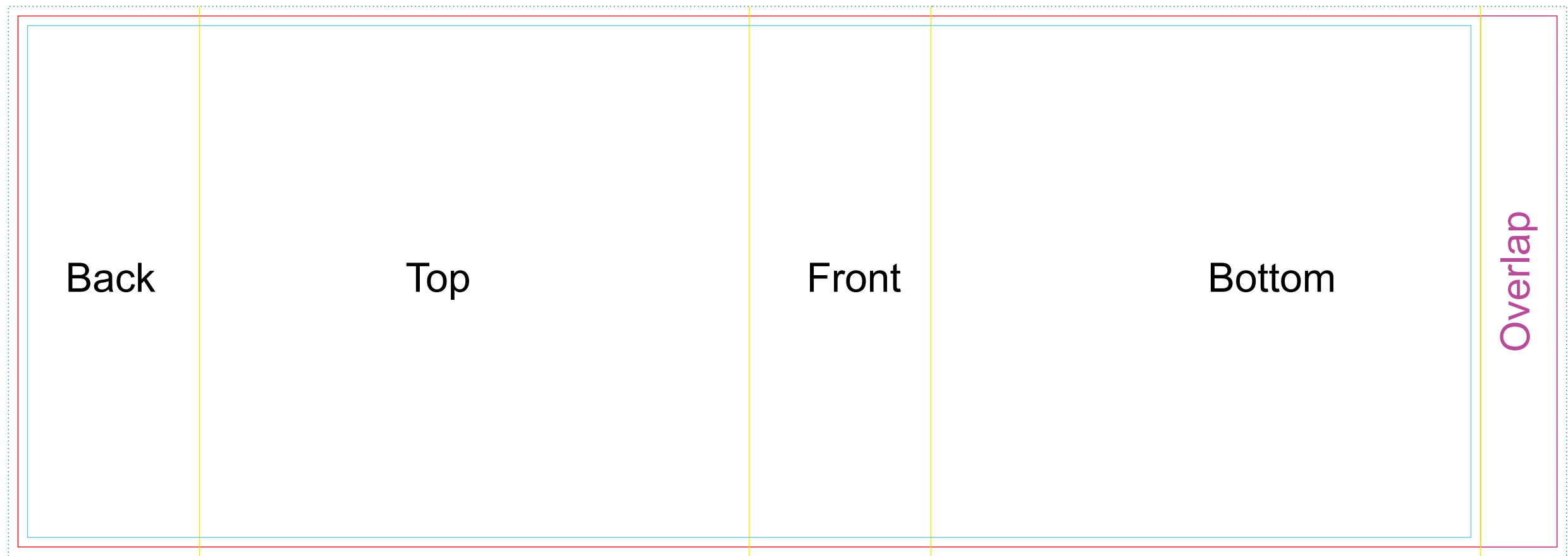
### DECORATION SIZE

#### DIGITAL PRINT

Print Area: 60mmL x 20mmH

Actual print size:

Finished print area - Digital Print



DECORATION SIZE

DIGITAL PRINT - SLEEVE

Print Area: 322mmL x 111mmH

Actual print size:

Max print area for copy & text

Finished print area

Folds

Bleed Requirement