

A 12x3 grid of colored squares. The central column (column 2) consists of 12 white squares, each containing a black 'X' mark. The other two columns (columns 1 and 3) contain a sequence of 11 colored squares each, with the bottom-most cell (row 12) being gray. The colors in columns 1 and 3 are identical and follow the same sequence: yellow, orange, pink, red, light green, dark green, cyan, blue, dark blue, and purple.

A diagram showing a green rectangular battery with a width of 16mm and a height of 25mm. The battery is positioned on a circular base. A dashed line indicates the internal area of the battery.

Diagram of a white plastic cup with a green lid. A green label is attached to the cup, featuring a dashed rectangular area with dimensions 50mm (width) and 20mm (height).

A diagram of a white plastic cup with a green lid. The lid has a green rectangular tab on top. A green rectangular label is wrapped around the middle of the cup. The label has a dashed rectangular border inside it. The text "50mm" is written horizontally above the dashed border, and "20mm" is written vertically to the right of the dashed border.

SIDE 2

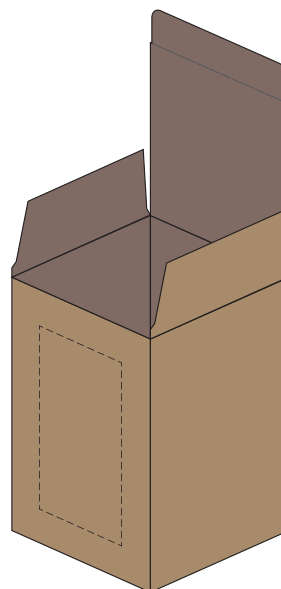
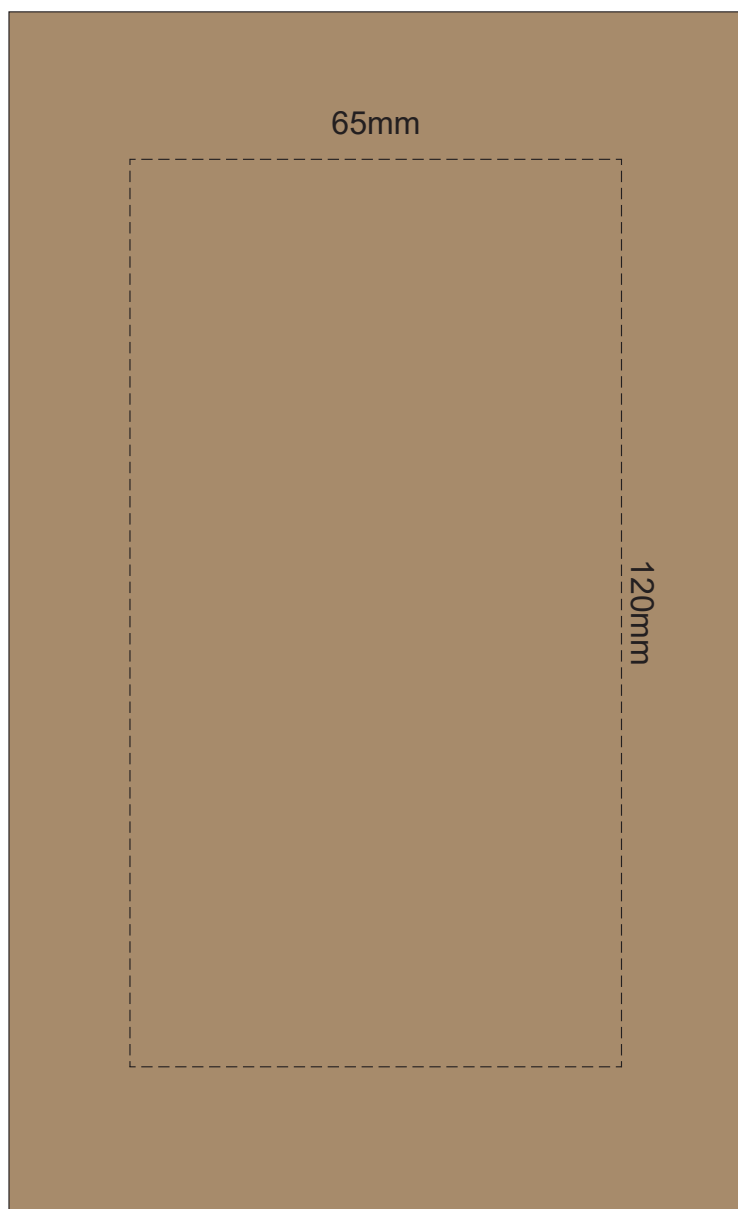


Diagram of a 500 ml plastic bottle. The bottle is white with a green cap. A green label is attached to the front, with dimensions 60mm (width) and 20mm (height) indicated.

Diagram of a white plastic cup with a green lid. A green label is wrapped around the middle of the cup. The label features a dashed rectangular area with dimensions 60mm (width) and 20mm (height).

[illegible]

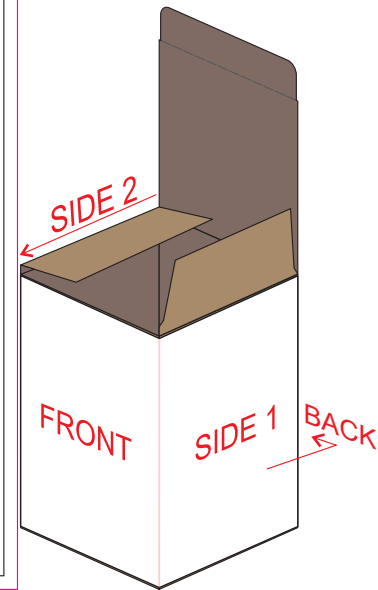
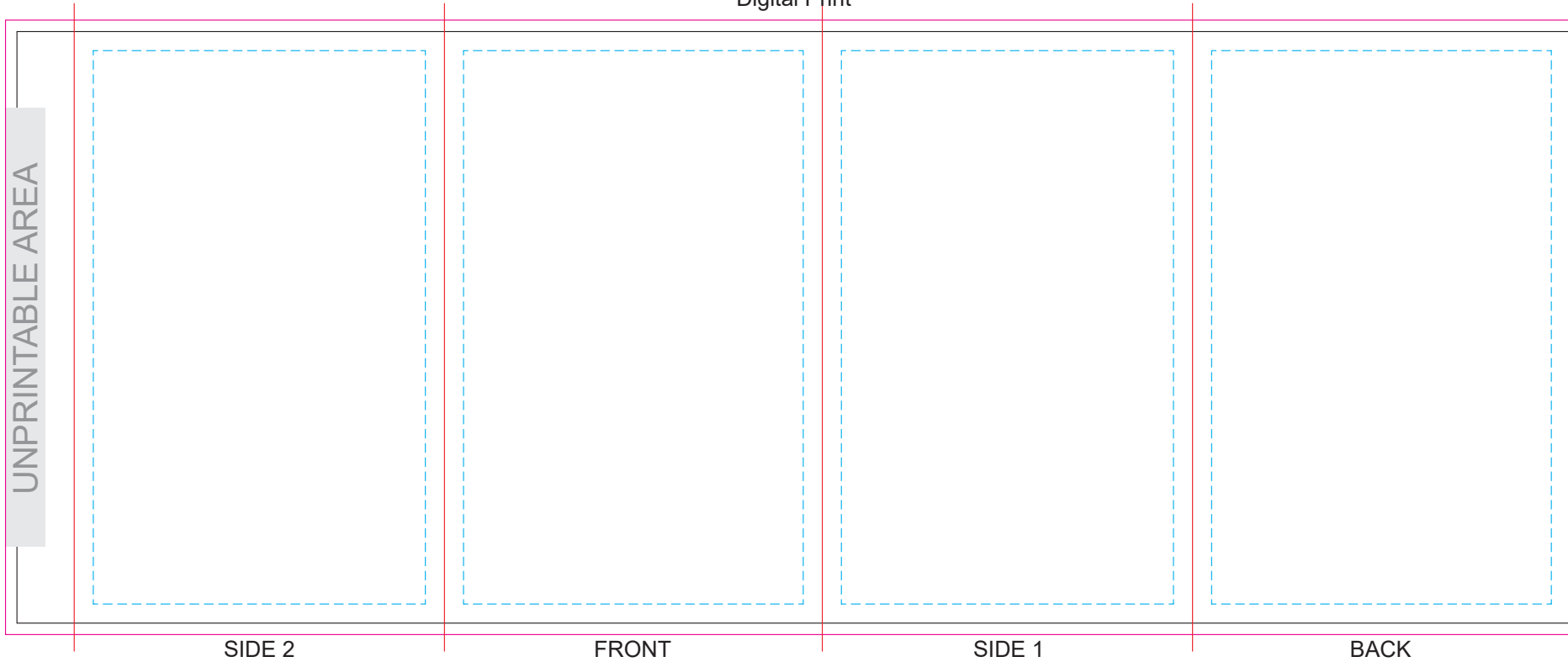
100% of Actual Size  
Digital Packaging Print  
FRONT



Artwork will be printed directly onto the product via CMYK printing (no white),  
colours will not be vibrant due to white ink not being available for this process.

# GIFT BOX SLEEVE

60% of Actual Size  
Digital Print



Blue Line = The SIGNIFICANT PRINT AREA  
(Keep all critical images & text within this box)  
Black Line = Maximum print area  
Pink Line = Bleed off to here  
Red Line = Fold Line